



# Pedestrian Mobility in and around Work Zones



**Seattle**  
Department of  
Transportation



# Our Vision, Mission, Values, & Goals

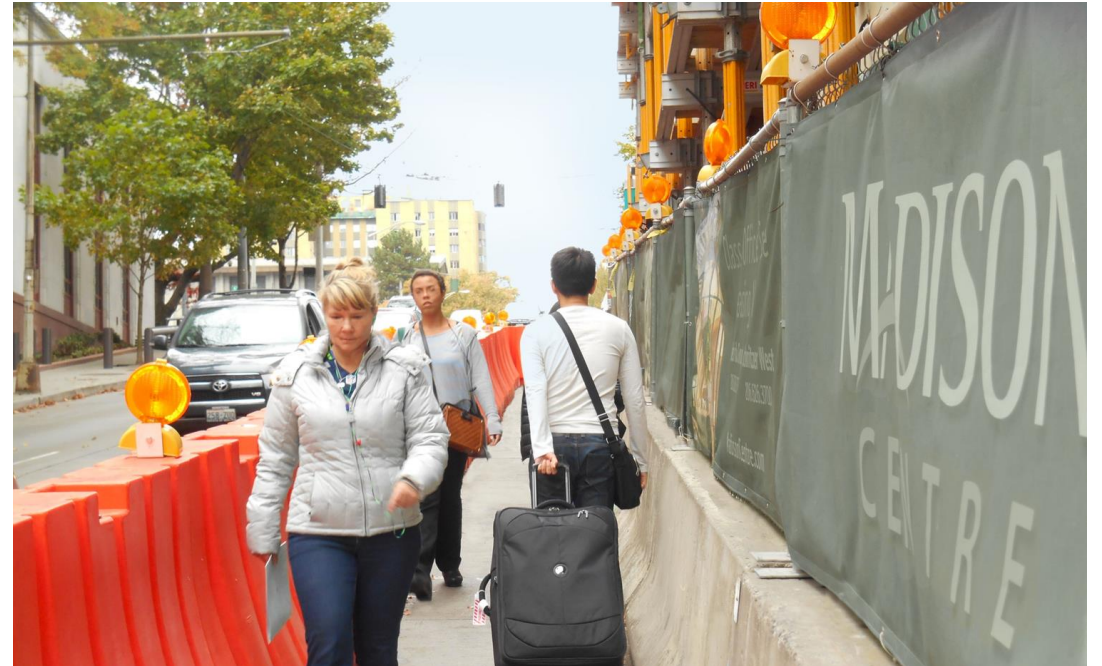
Seattle is a thriving equitable community powered by dependable transportation. We're on a mission to deliver a transportation system that provides safe and affordable access to places and opportunities.

## Core Values & Goals:

Equity, Safety, Mobility, Sustainability, Livability, and Excellence.

# Purpose

Today we will be providing a refresher on SDOT Director's Rule 10-2015 and an update on the Street Use focus for the past few years.





# Presentation Outline

- What is a Director's Rule
- Director's Rule 10-2015
  - Requirements
  - Exemptions
- Enforcement Process
- What have we been working on?
- What's Next?
- Q&A



# What is a Director's Rule

DRs are the strongest policy documents the City has that aren't adopted by City Code

# What does DR 10-2015 do?

- Emphasize closures as last resort
- Establish clear standards for materials & placement
- Apply to all work in ROW
- Clarify considerations for permitting types of access and closures





# Requirements





# Before and After Example

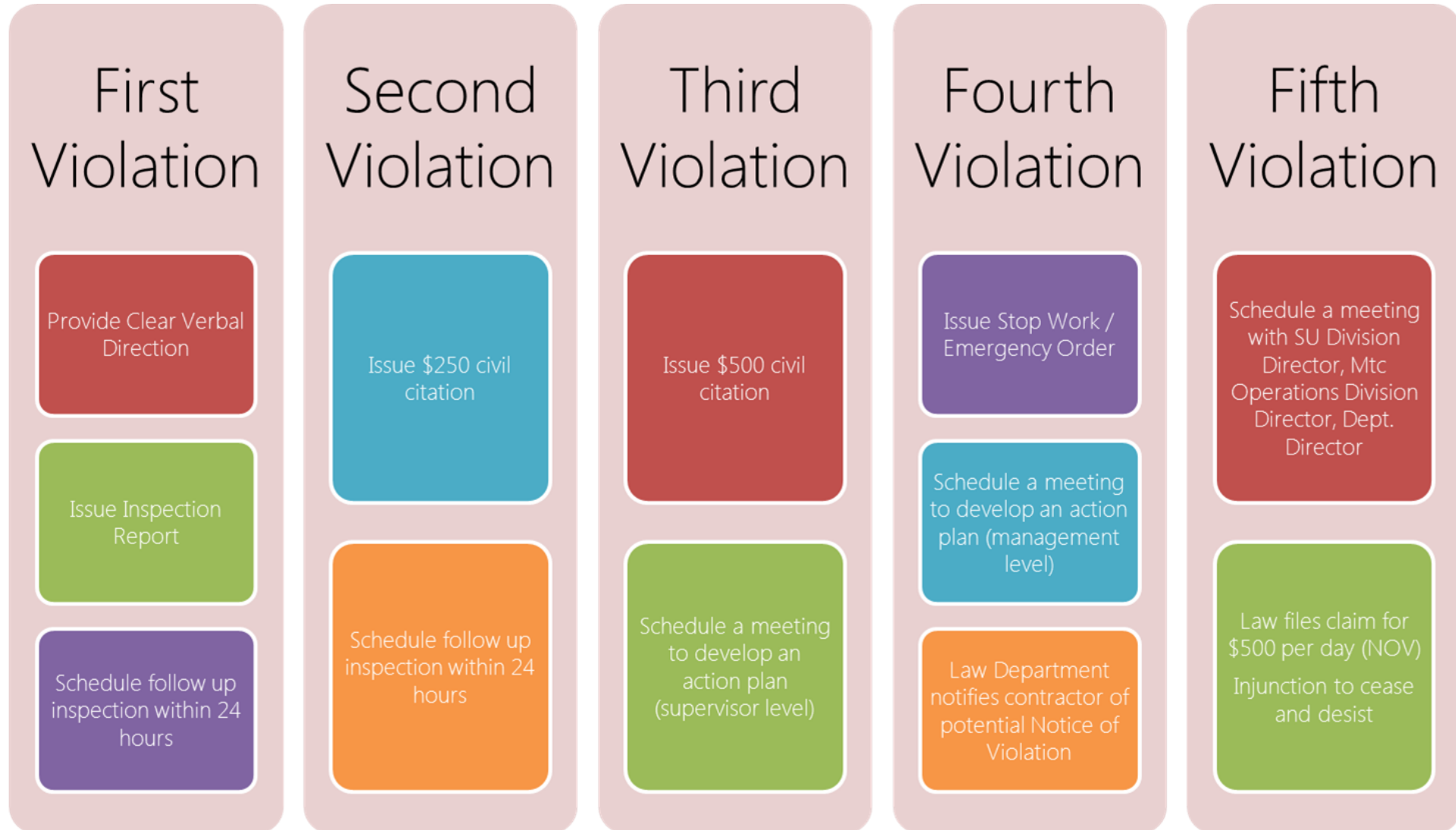




# Exemptions

- Project needs to close the ROW for repair, installation or restoration
- Work poses a hazard to the public
- Project needs to control the adjoining ROW for export, import or deliveries
- Terrain
- Proposed reroute/detour will not impact adjacent properties and businesses
- Cost of maintaining an open sidewalk exceeds 20% of total construction budget

# Enforcement Process





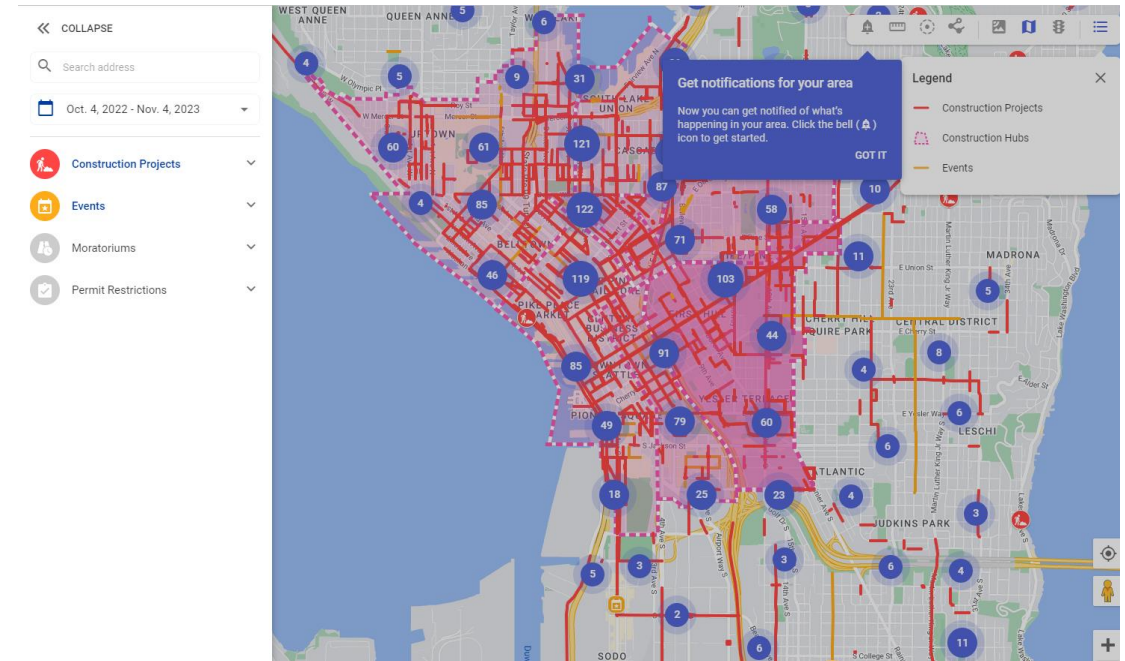
# What have we been working on?

- Public Facing Construction Impact Map
- Safe Start Permitting
- Accela Permitting System Implementation
- Hub Evaluation
- Snow and Ice Removal Sidewalk Emphasis
- Updated Use Fee Model



# What's next?

- Develop reporting metrics within the new permitting system
- Transition from pandemic business support to a sustainable business permitting model
- Monitor pedestrian and traffic patterns as businesses return to the business core
- Evaluate staffing levels to support review and enforcement





# Questions?

## Stay in touch:



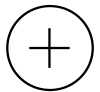
[Elizabeth.Sheldon@seattle.gov](mailto:Elizabeth.Sheldon@seattle.gov)



206.850.7697



[dotMaps public viewer \(seattle.gov\)](#)





From the entire SDOT Team:  
**Thank you!**